



Cx360

**EHR TECHNOLOGY
FOR COMPLEX CARE
COMMUNITIES**

coresolutionsinc.com

THERE IS NO EASY WAY, BUT THERE IS A BETTER CHOICE

Core is a trusted EHR vendor that leverages technology and data to support provider organizations committed to improving whole person care and quality of life for all people touched by the extraordinary challenges of behavioral health and other human conditions. Cx360 is designed to provide complex care communities with the technology solutions they need to navigate changing regulatory landscapes and achieve desired outcomes around whole person care.

CAPABILITIES AT A GLANCE

DASHBOARD >

CLIENT CHART & RECORD >

SCHEDULER >

REPORTING >

FINANCE & BILLING >

ADD-ONS >

UTILITIES >

COMMUNITIES WE SERVE

IDD

SUBSTANCE USE

BEHAVIORAL HEALTH

CHILD & FAMILY SERVICES

HEALTH CLINICS



LEVERAGING TECHNOLOGY & DATA TO SUPPORT COMPLEX CARE COMMUNITIES

Built as a complete solution set for client management, task management, service documentation and billing, Cx360's preconfigured solutions support a full array of programs available to the communities we serve.



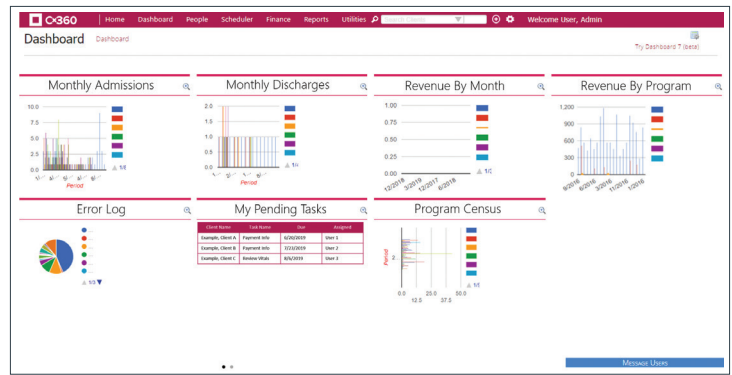
AN ENTERPRISE EHR SOLUTION THAT STANDS THE TEST OF TIME

Cx360 Enterprise is a comprehensive EHR solution for large and complex behavioral health and human services organizations.

DASHBOARD

Dashboards can be customized based on user roles and permissions to provide a snapshot of information from across Cx360 for users to quickly review information and complete tasks.

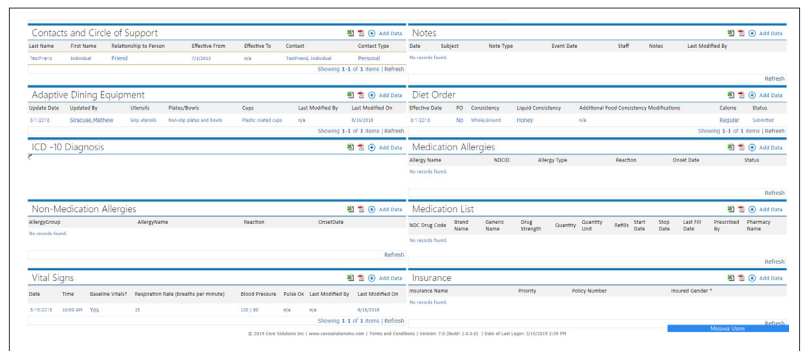
- Case Loads
- Current Schedules
- Missed Appointments
- Tasks
- Productivity
- Many More



CLIENT CHART & RECORD

Get single-click access to all client information across multiple programs and levels of care in an easy-to-reference format with drill-down capabilities and multiple views for enhanced productivity.

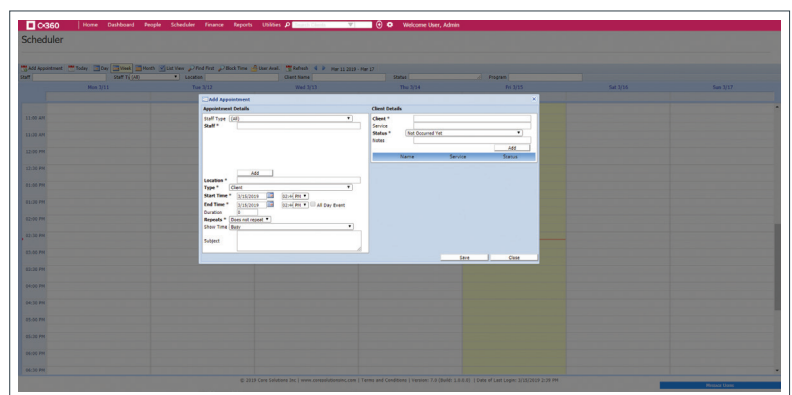
- Ability to Quickly Add or Edit Information
- Quick Links to More Information
- Personalization of Face Sheets
 - » Pre-Loaded Assessments
 - » Treatment Plans
 - » Vital Signs and Allergies
- Color Coding for Ease of Access
- Templated Categories & Fields
- Authorized User Capabilities
- “New Client” Workflows



SCHEDULER

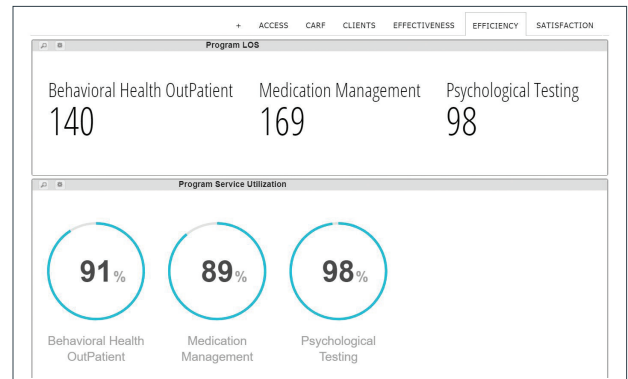
Use a comprehensive, embedded calendar for scheduling and tracking appointments for clients and staff, streamlining time and resource management, billing, and more.

- Coordinate & Schedule Groups
- Create Recurring Appointments
- Track & Report Appointment Status
- View Schedule in Various Ways
- Block Time for Specific Tasks
- Find Time Slots Across Locations, Modalities & Staff
- Interface with Google Maps



REPORTING

- Create custom reports
- Modify Existing Reports for Maximum Data Access
- Use All Data for Reporting (Native & Custom Fields)
- Easy-to-Use Reports Wizard
- Export to Multiple Formats: Excel, .CSV, PDF & More
- Ideal for Non-Technical Users



FINANCE & BILLING

Leverage comprehensive revenue cycle management capabilities designed specifically for health and human services organizations.

- Generate & Process HIPAA 837/835 Institutional & Professional Files
- Process HIPAA 270/271 Eligibility Verification Transactions
- Use Configurable HIPAA Billing Templates
- Configure Payer-Specific Business Rules
- Set Fee Schedules by Staff Type
- Credential for Value-Based Payments
- Configure Usual Charges & Expected Reimbursements
- Manage Grants & Accounts Receivable
- Integrate General Ledgers
- Interface with Commercial Clearing Houses
- Get Designated Provider Management

UTILITIES

Use a variety of Cx360's configurable utilities that make access to data fast and simple. APIs are available to help advanced technical users to author and integrate new modules.

- Forms Designer
- Reports Designer
- Workflow Engine
- Business Rules (Alerts) Engine
- Mail Merge Templates

ADD-ONS

- **PORTAL**
Client accessible portal for increased engagement
- **MOBILE**
Cx360 mobile allows for disconnected usability when Internet is not available
- **BUSINESS INTELLIGENCE**
Capture graphical productivity reports and display the data in a variety of formats, including at the individual record level
- **TELEHEALTH**
Available through the Client Portal, The Telehealth module enables clients to connect directly to their service providers via web-cam
- **E-PRESCRIBING**
Seamless integration with Rcopia for electronic prescribing functionality

WHAT MAKES Cx360 DIFFERENT?

- System Architecture & Flexibility
- Vendor Independence
- Hardware Independence
- Operation System Independence
- Maximum Reuse of Components
- Web-Enabled
- Table & Rules Driven
- Flexible Security
- Scalability
- High Availability

**DISCOVER HOW CORE CAN HELP.
SCHEDULE A 1:1 NOW.**

- ✓ 15 min call
- ✓ Tailored demo
- ✓ Get all your questions answered

[Request a Demo](#)



ABOUT CORE | Core's EHR solutions for complex care communities have been trusted by executives, program directors and end-users alike for twenty years. With decades of experience and a clear vision for how technology and data will support provider organizations who are committed to improving whole person care and quality of life, Core is proud to be your partner first and vendor second.